

Hampton City Schools
Excel Art Program
Portfolio ~ Option One

**HAMPTON CITY SCHOOLS
DEPARTMENT OF ACADEMIC ADVANCEMENT AND ENRICHMENT
EXCEL ART PROGRAM, GRADES 3-8**

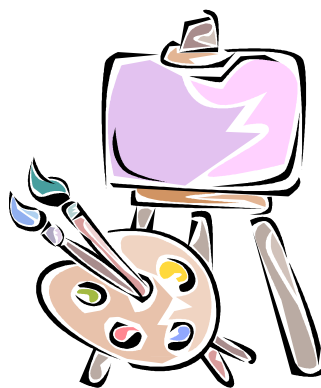
Art Portfolio Packet

Information for Parent and Student

- All candidate submissions should be original
(not classroom assignments)
- The work must be the sole effort of the candidate
 - Artwork will not be returned
- A referral form and parent rating scale (for art) must be included
 - **Please read all directions carefully**

Take Note

- Student should complete all exercises in portfolio
- Deadline for referral packages ~ October 15th, January 15th, May 15th
- Return completed packages to DAAE office:
One Franklin Street, Hampton, VA 23669



For more information, contact office of:

Ruth Grillo, Director
Dept. Academic Advancement and Enrichment
gifted@hampton.k12.va.us
757-727-2160

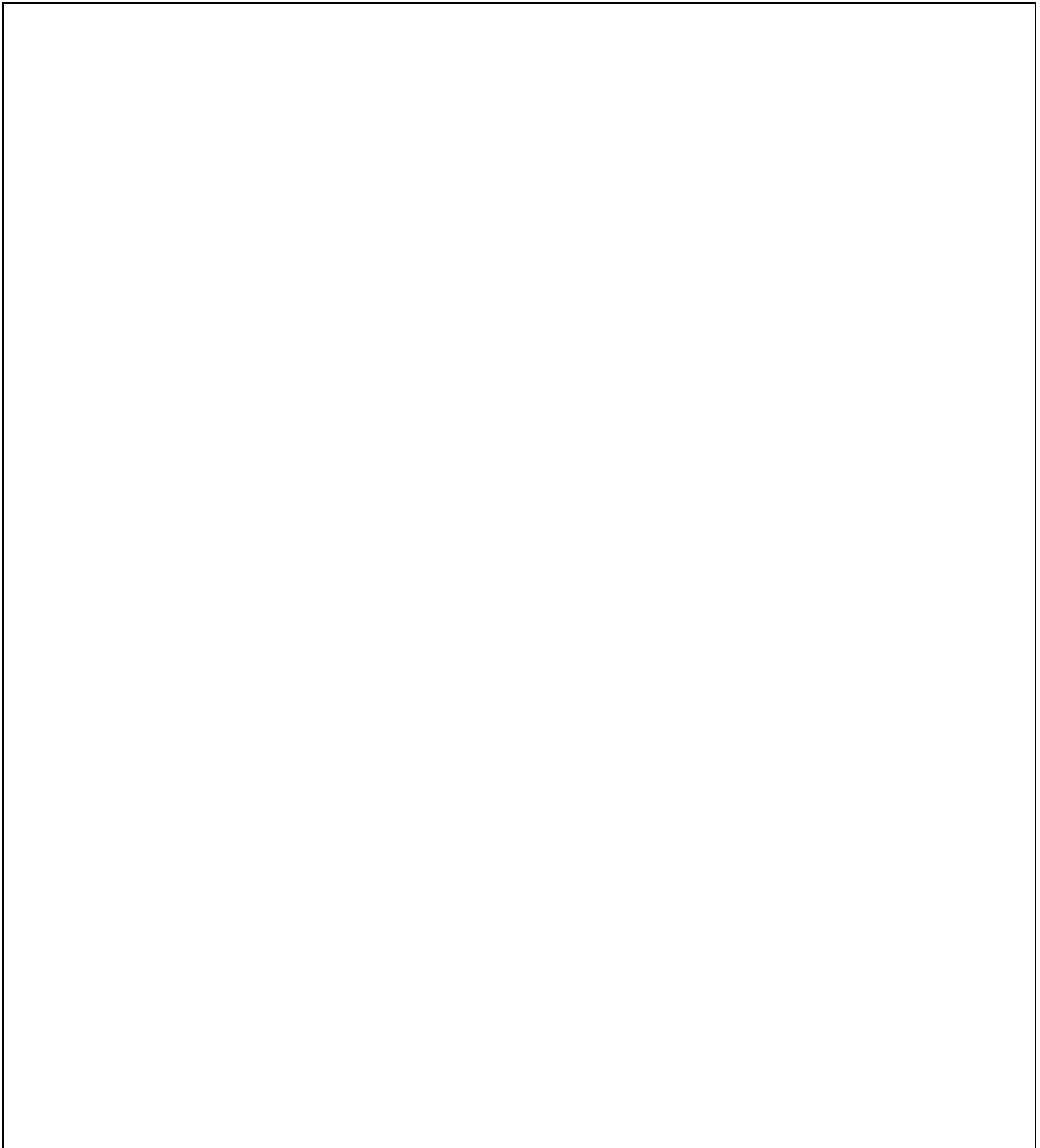
Hampton City Schools Non-Discrimination Notice

Hampton City Schools does not discriminate on the basis of race, color, national origin, sex, disability, age or other protected classes in its programs and activities and provides equal access to the Boy Scouts and other designated youth groups. The following person has been designated to handle inquiries regarding the non-discrimination policies:

Robbin G. Ruth, Executive Director of Human Resources

Hampton City Schools
Excel Art Program
Portfolio ~ Option One

Page 2. Draw a self-portrait. This is a picture of you. Include as many details as possible. This may be a portrait of your head and shoulders or a drawing of your whole body.



Hampton City Schools
Excel Art Program
Portfolio ~ Option One

Page 3. Draw a room with two walls. Include objects and/or people in the background, middle ground and foreground. Show what you know about perspective.



Hampton City Schools
Excel Art Program
Portfolio ~ Option One

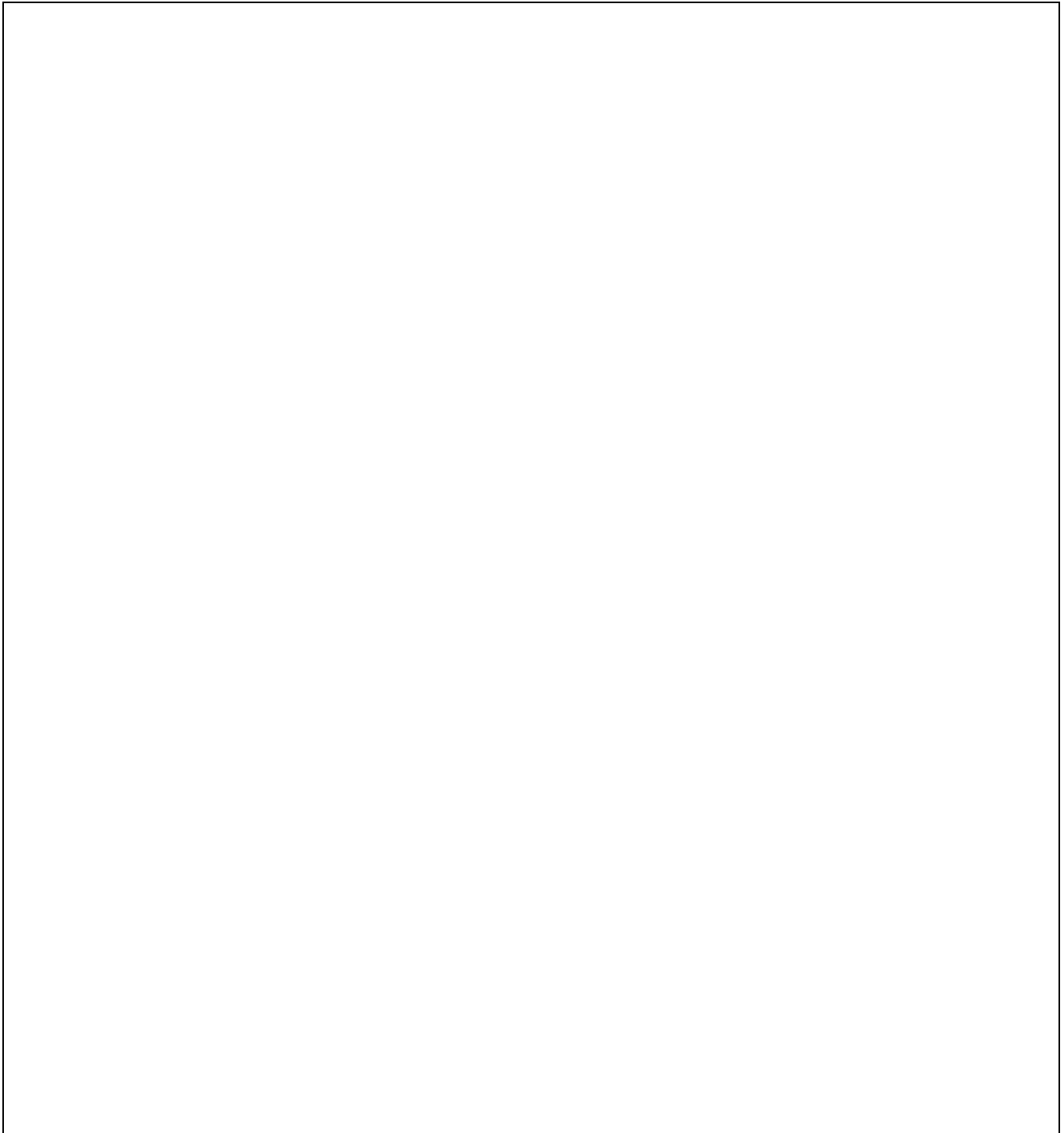


Page 4. Draw a sequence of four pictures, telling a story in four steps.
Please draw as large as possible and include supporting details.

1	2
3	4

Hampton City Schools
Excel Art Program
Portfolio ~ Option One

Page 5. Draw a loosely crumpled piece of lined notebook paper. Pay careful attention to the effect of light and shadow on the surface of the paper. Use the lines on the notebook paper to help you define the shape.

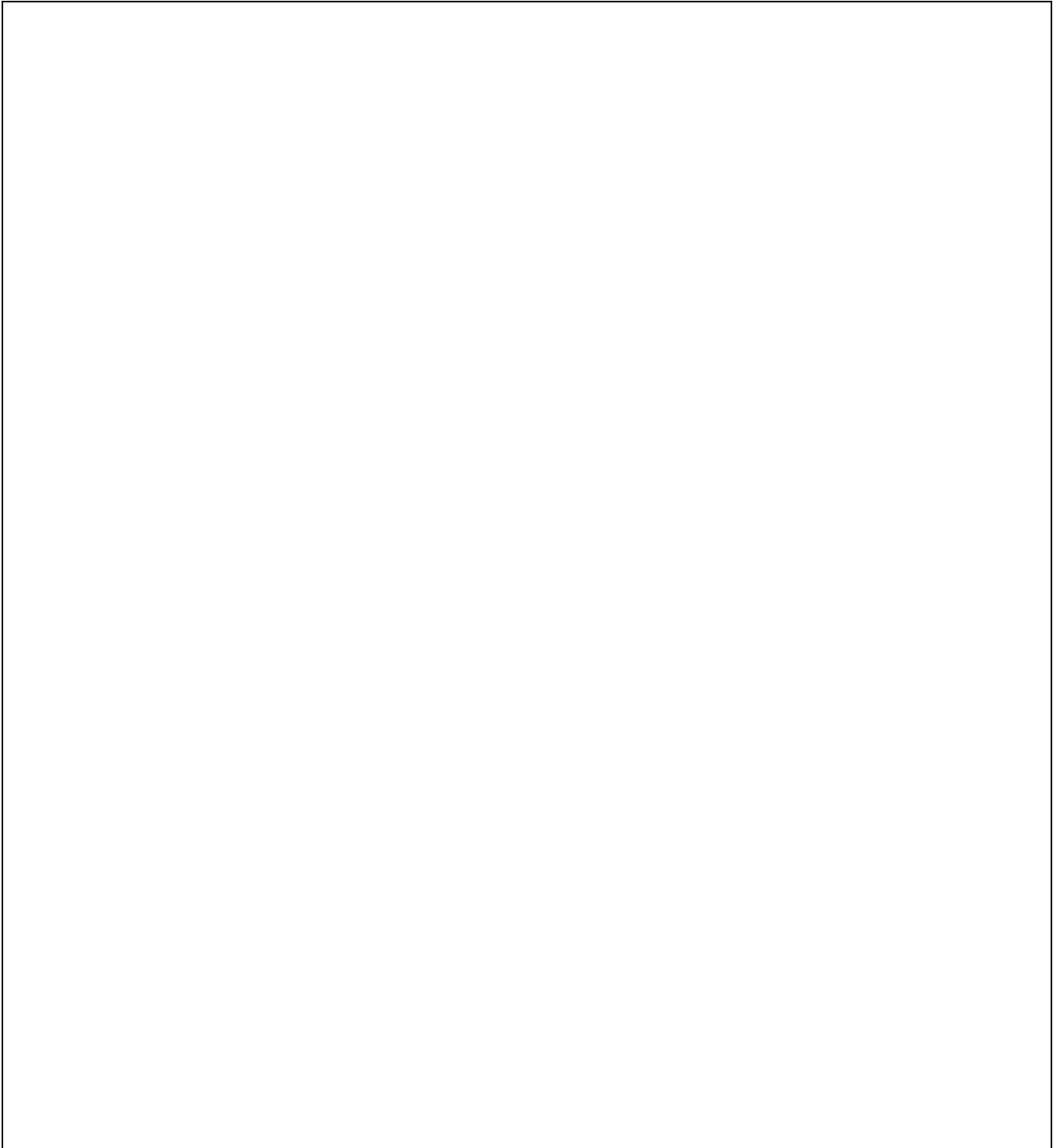


Hampton City Schools
Excel Art Program
Portfolio ~ Option One



~Artist's Choice~

Page 6. Draw a picture of something that you like to draw and feel that you do well.



Hampton City Schools
Excel Art Program
Portfolio ~ Option One